

DIAMETER
KE-UP PULLEY



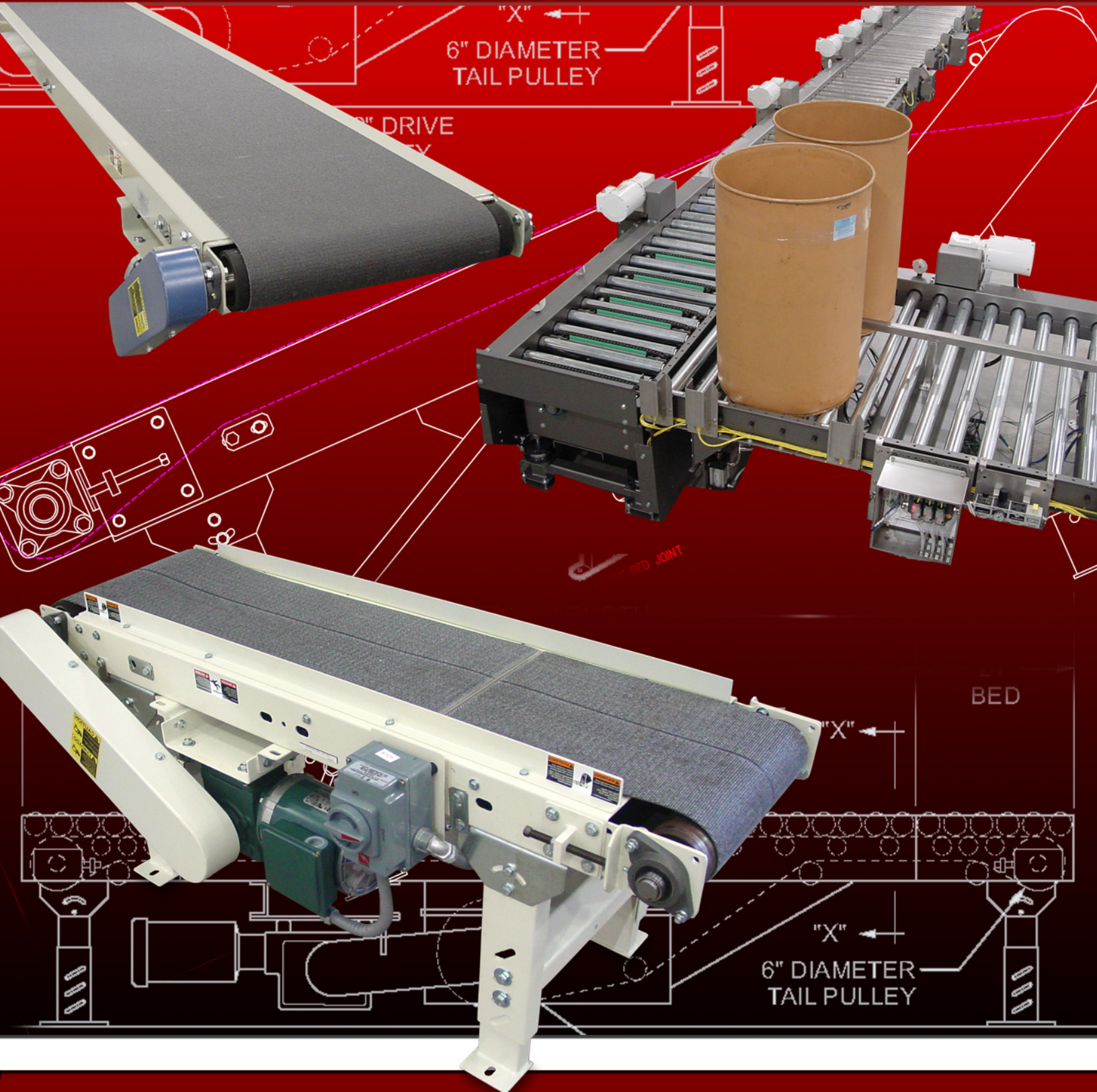
24" BELT
TAKE-UP

"X" ←

BED

Dillin Engineered Systems Corp.
A Division of Dillin Automation Systems Corp.

CDLR & Belt Conveyor Catalog



"X" ←
6" DIAMETER
TAIL PULLEY

24" DRIVE
PULLEY

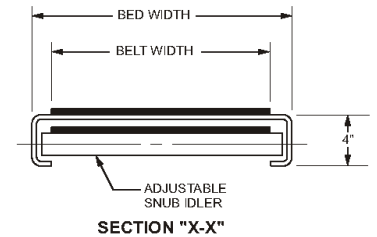
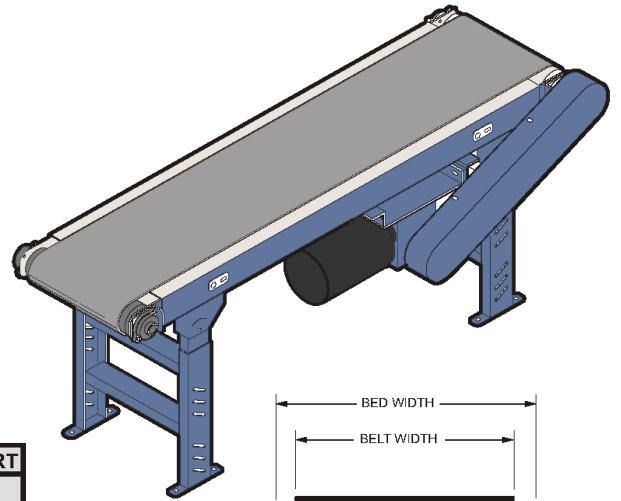
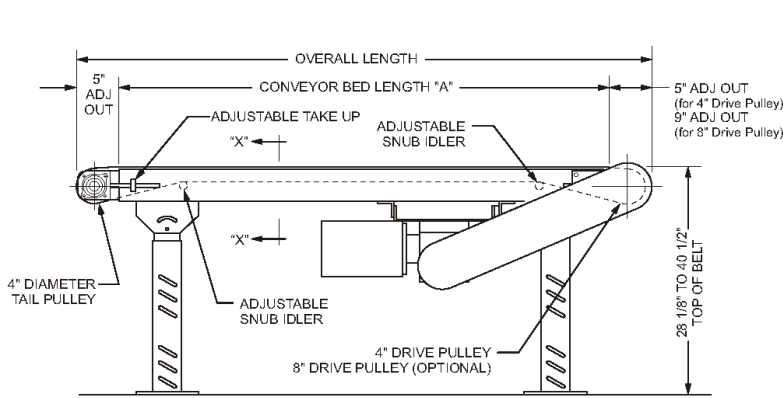
BED JOINT

BED

"X" ←

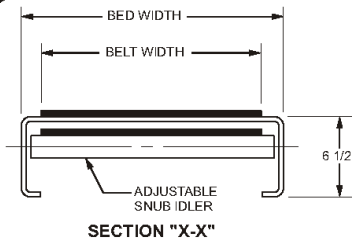
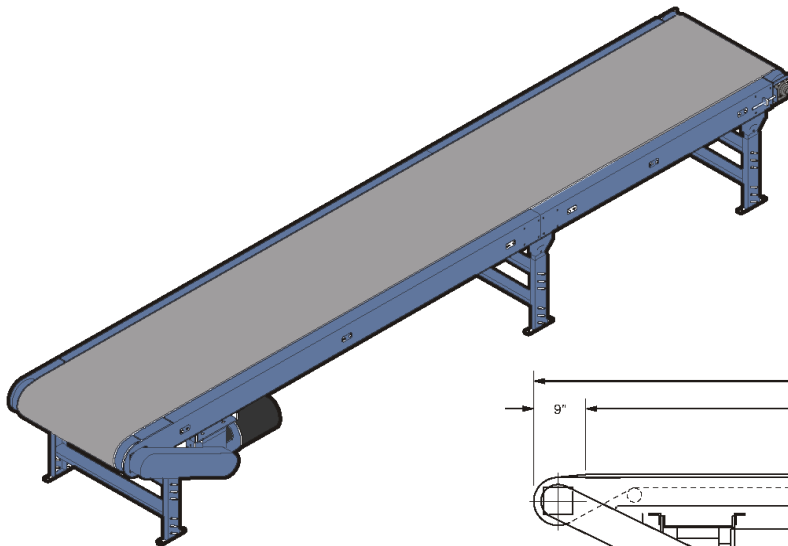
"X" ←
6" DIAMETER
TAIL PULLEY

Belt Conveyor: Light Duty Slider Bed

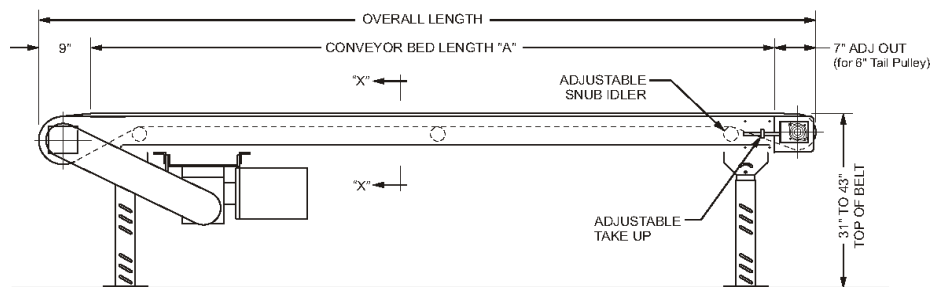


LOAD CAPACITY CHART	
Horizontal Conveyor Slider Bed @ 60 FPM	
HP	TOTAL LOAD
1/2	435 lbs.
3/4	650 lbs.
1	810 lbs.

Belt Conveyor: Heavy Duty Slider Bed



LOAD CAPACITY CHART	
Horizontal Conveyor Slider Bed @ 60 FPM	
HP	TOTAL LOAD
1/2	435 lbs.
3/4	650 lbs.
1	810 lbs.
1 1/2	1080 lbs.
2	1300 lbs.



Applications

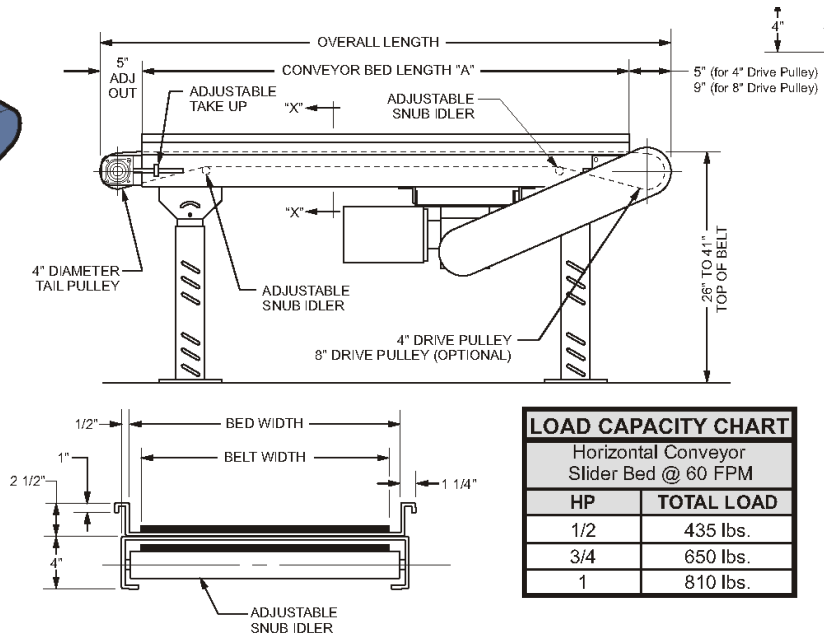
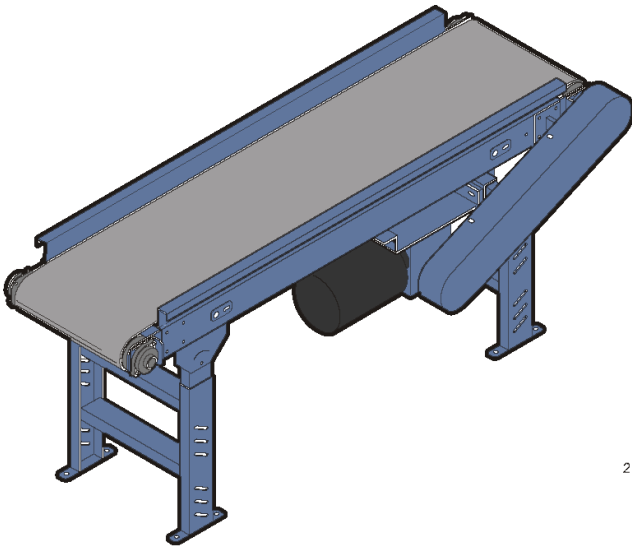
- Packing
- Inspecting
- Sorting
- Transporting
- Assembling
- Testing

Standard Available Belt Widths:

6 in., 8 in., 10 in., 12 in., 14 in., 16 in., 18 in., 20 in., 24 in., and 30 in.

For more specific applications and specifications contact Dillin Engineered Systems.

Belt Conveyor: Trough Bed



LOAD CAPACITY CHART	
Horizontal Conveyor Slider Bed @ 60 FPM	
HP	TOTAL LOAD
1/2	435 lbs.
3/4	650 lbs.
1	810 lbs.

SECTION "X-X"

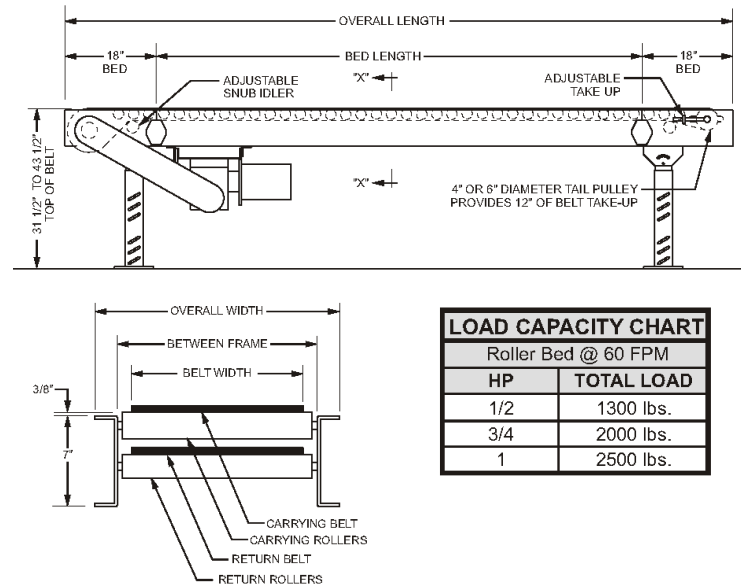
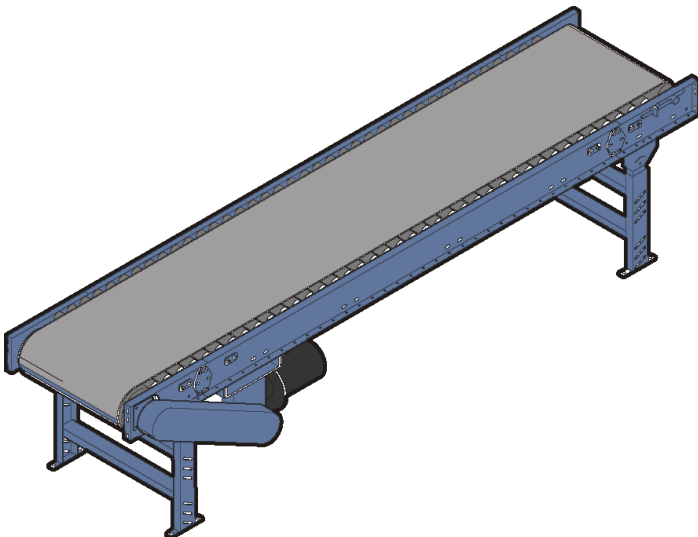
Applications

- Conveys Boxes, Bags, Cases, and Loose Parts
- Built in guard rails allow overhead Conveying

Standard Available Belt Widths:

- 6 in., 8 in., 10 in., 12 in., 14 in., 16 in., 18 in., 20 in., 24 in., and 30 in.

Belt Conveyor: Roller Bed



LOAD CAPACITY CHART	
Roller Bed @ 60 FPM	
HP	TOTAL LOAD
1/2	1300 lbs.
3/4	2000 lbs.
1	2500 lbs.

SECTION "X-X"

Applications

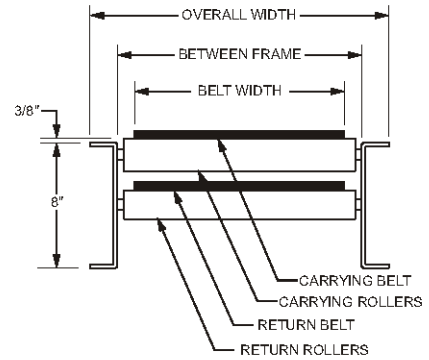
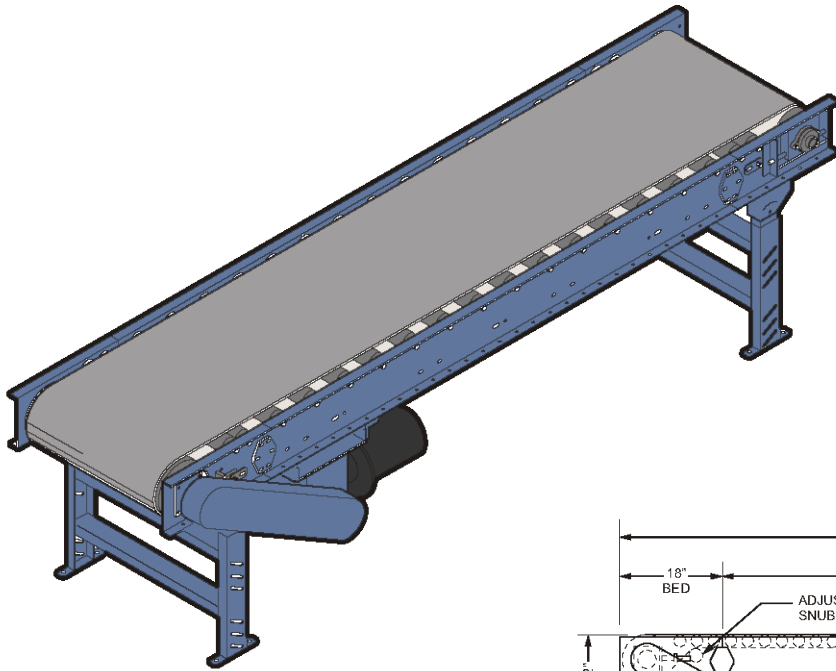
- Packing
- Transporting Horizontally or on Incline
- Heavier loads can be conveyed because of less friction build up
- Inspecting
- Assembling
- Sorting
- Testing

Standard Available Belt Widths:

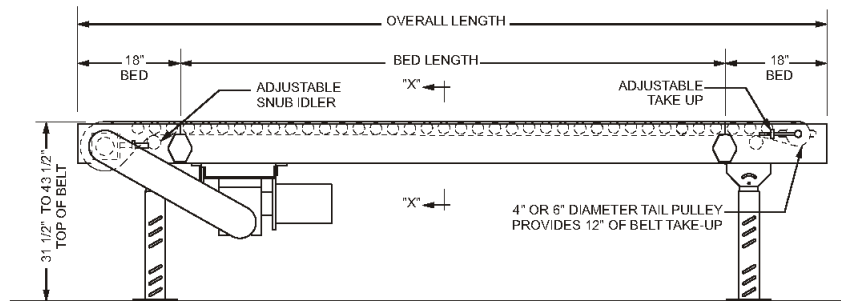
- 12 in., 18 in., 24 in., 30 in., 36 in., 42 in., and 48 in.

For more specific applications and specifications contact Dillin Engineered Systems.

Belt Conveyor: Heavy Duty Roller Bed



SECTION "X-X"



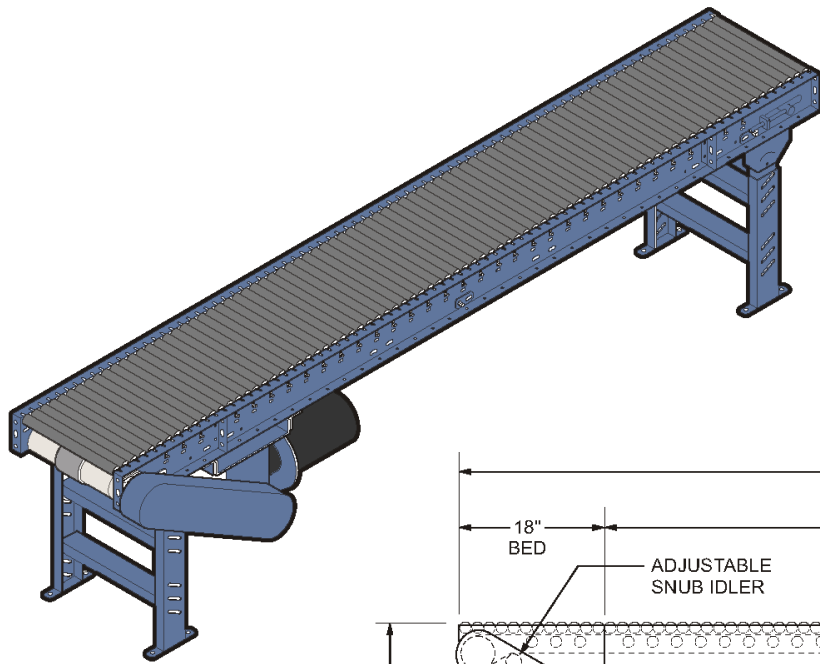
LOAD CAPACITY CHART							
Horizontal Conveyor Roller Bed @ 30 FPM							
Diameter Drive Pulley	HP	Overall Frame Width 26" to 30"		Overall Frame Width 36" to 54"		Overall Frame Width 60" to 62"	
		Total Load (lbs.)		Total Load (lbs.)		Total Load (lbs.)	
		UP TO 50'	UP TO 100'	UP TO 50'	UP TO 100'	UP TO 50'	UP TO 100'
6"	2	13400	11300	11300	7500	10600	6200
		23200	21100	21100	17300	20400	16000
8"	5	25000	27500	25000	23700	25000	22300

Standard Available Belt Widths:

12 in., 18 in., 24 in., 30 in., 36 in., 42 in., and 48 in.

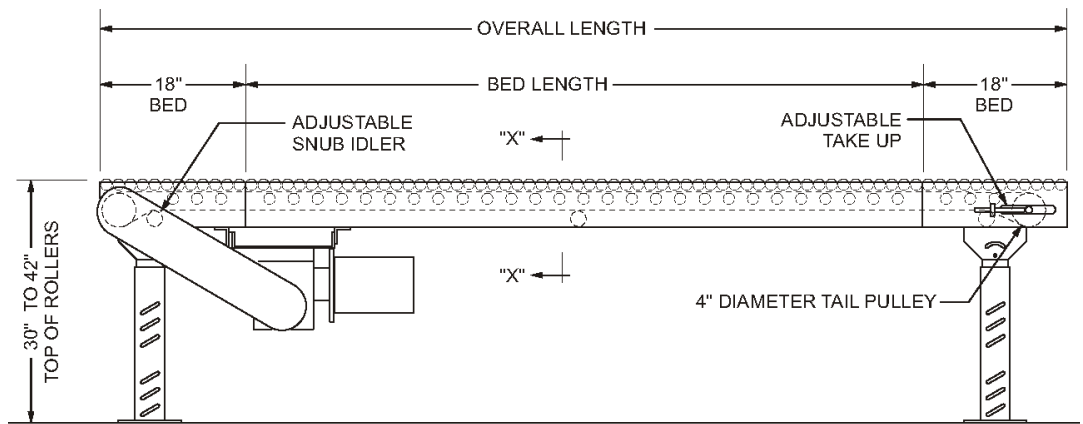
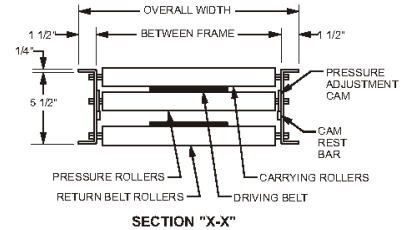
Applications

- Packing
- Transporting Horizontally or on Incline
- Heavier loads can be conveyed because of less friction build up
- Inspecting
- Assembling
- Sorting
- Testing



Applications

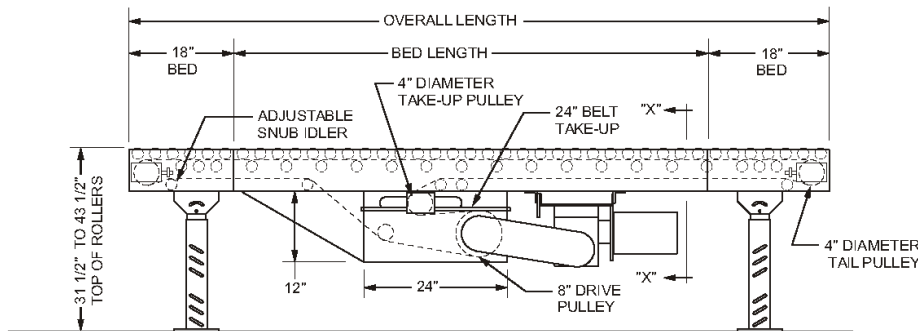
- Accumulating light duty boxes tote bins, baskets, etc.
- Minimum back pressure
- Economical



Standard Available Belt Widths:

10 in., 13 in., 16 in., and 22 in.

Belt Driven Live Roller: Medium Duty Conveyor



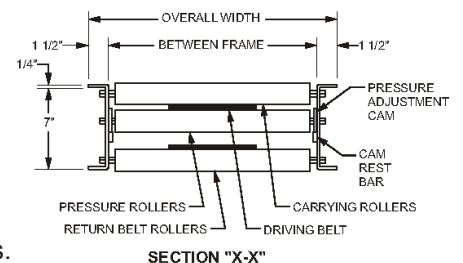
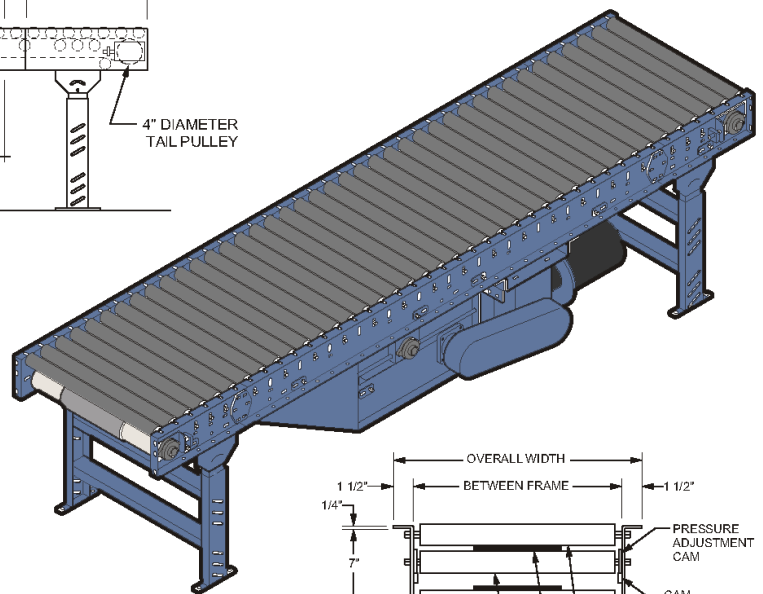
Applications

- Accumulating light duty boxes tote bins, baskets, etc.
- Minimum back pressure

Standard Available Belt Widths:

15 in., 19 in., 25 in., 27 in., 33 in., or 39 in.

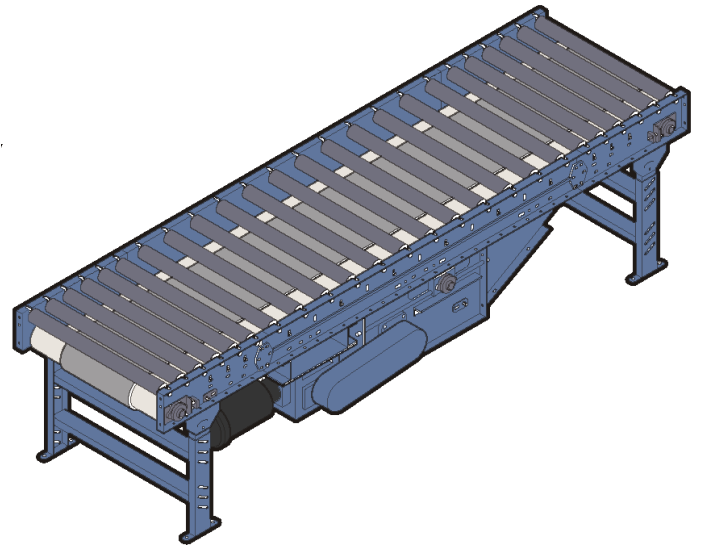
LOAD CAPACITY CHART	
Roller Bed @ 60 FPM	
HP	TOTAL LOAD
1/2	1300 lbs.
3/4	2000 lbs.
1	2500 lbs.
1 1/2	3300 lbs.
2	3900 lbs.



For more specific applications and specifications contact Dillin Engineered Systems.

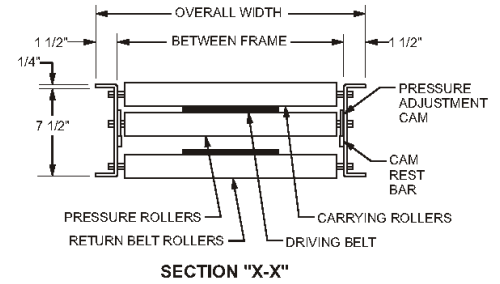
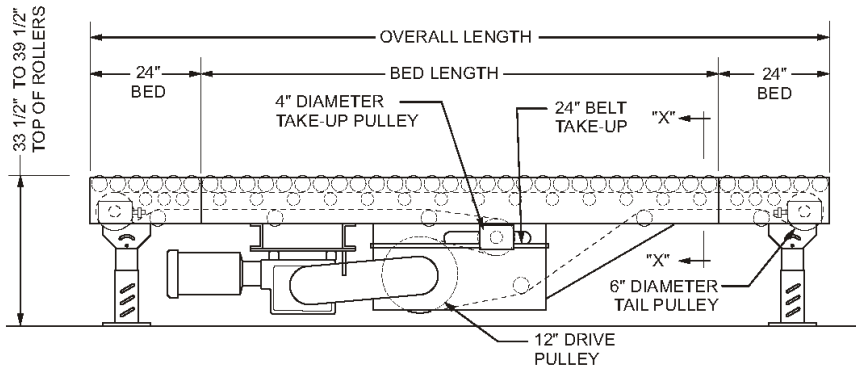
Belt Driven Live Roller: Heavy Duty Conveyor

LOAD CAPACITY CHART							
30 FPM Roller Speed							
Diameter Drive Pulley	HP	B/F WIDTH 27" to 31"		B/F WIDTH 33" to 51"		B/F WIDTH 57" to 61"	
		50' OAL	100' OAL	50' OAL	100' OAL	50' OAL	100' OAL
12"	2	8000 lbs.	6000 lbs.	600 lbs.	--	5000 lbs.	--
16"	3	15000 lbs.	12000 lbs.	12000 lbs.	8000 lbs.	12000 lbs.	6000 lbs.
	5	18000 lbs.	17000 lbs.	17000 lbs.	12000 lbs.	16000 lbs.	11000 lbs.



Standard Available Belt Widths:

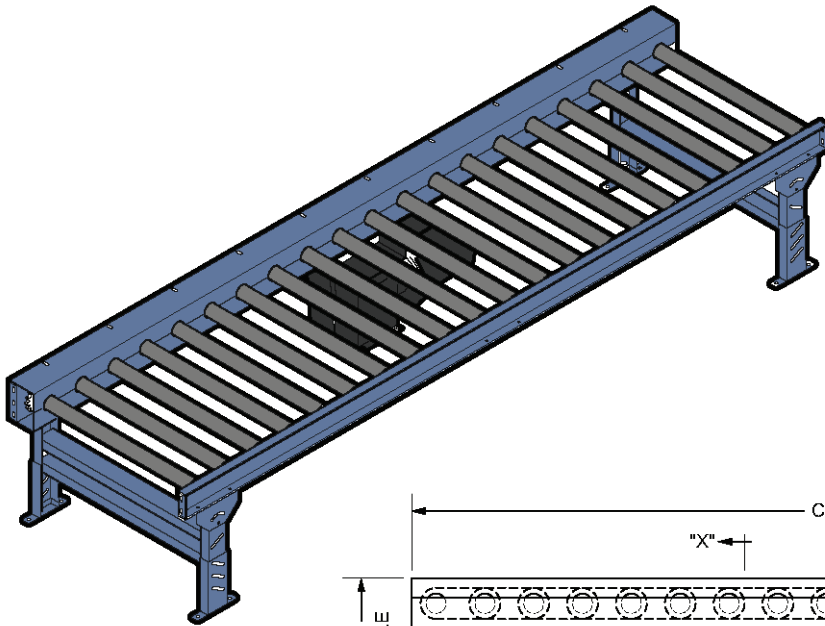
27 in., 31 in., 33 in., 39 in., 45 in.,
51 in., 57 in., 61 in.



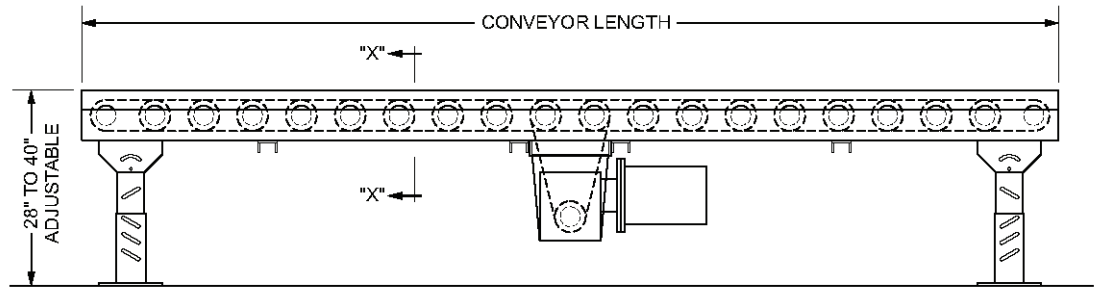
Applications

- Heavy Duty Conveying
- Limited Accumulation
- Rugged Design
- Easy Installation and adjustment

For more specific applications and specifications contact Dillin Engineered Systems.

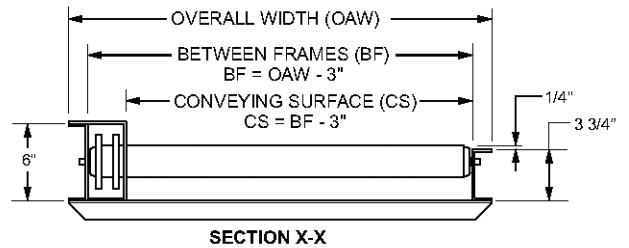


LOAD CAPACITY CHART	
Conveyor Speed 60 FPM	
HP	TOTAL LOAD
1/2	1625 lbs.
3/4	2375 lbs.
1	3025 lbs.
1 1/2	3900 lbs.
2	4750 lbs.



Applications

- Wash Down Operations
- Pallets
- Positive Drive- No Belt Slippage
- Oily Condition
- Drums

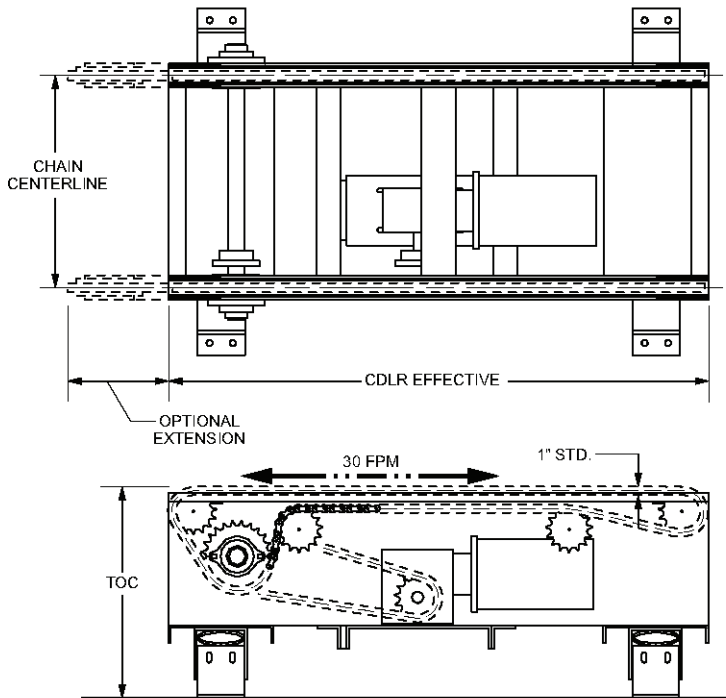
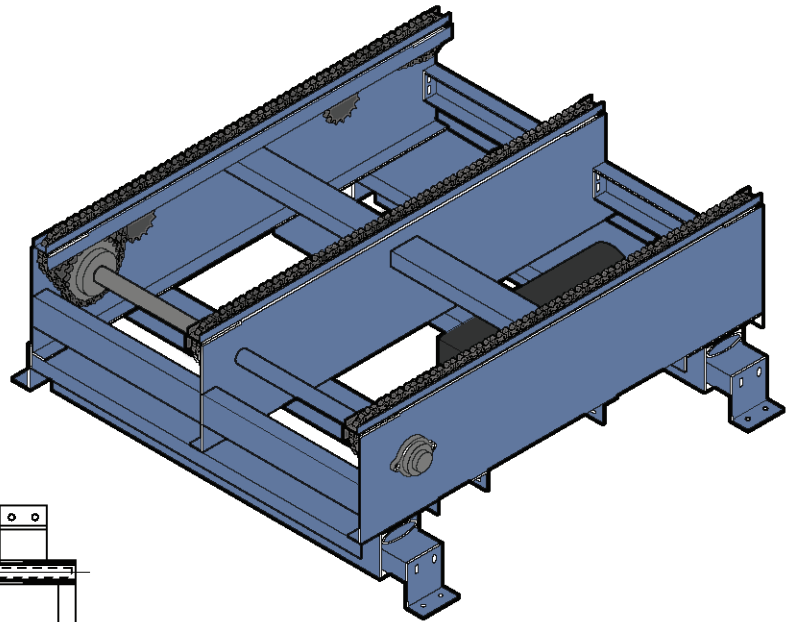


Bed

- Affective conveying widths: 13 - 37 in.
- Painted formed steel channel
- Also available in stainless steel
- Frame construction: light, medium, and heavy duty
- Bolted construction
- Optional curves 30°, 45°, and 90°

Applications

- Transferring Products 90 onto Adjacent Conveyor
- Ideal for Pallets or Other Products with a Sturdy conveying surface





Dillin Engineered Systems Corp.
A Division of Dillin Automation Systems Corp.

CDLR & Belt Conveyor Catalog



Dillin Engineered Systems
8030 Broadstone Rd
Perrysburg, OH 43551

Phone: 419.666.6789
Fax: 419.666.4020